

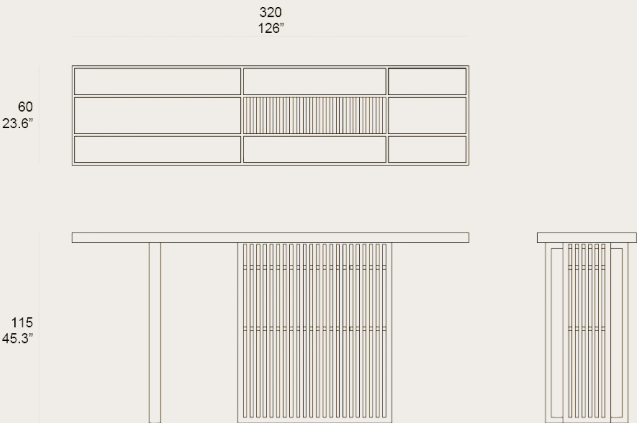
EQUADOR COLLECTION
by Pensi Studio

With wood, stone, and fabric as its core elements, the Equador Collection plays with light and shadow, revealing beauty through contrast. Its structured lines allow light to flow gracefully, creating an ambiance that is both soft and captivating. Designed to provide comfort and a momentary escape from the hustle of daily life, this collection creates a serene space to unwind. Each piece is crafted from Otazen’s signature teak, ensuring not only durability but also a deep connection with nature.



Remarks

- Table top available in solid teak wood FSC 100% and porcelanic surface
- Base in solid teak wood FSC 100%
- Fittings in stainless steel 304
- Glides in PA rubber
- Dining tables include adjusters
- Packaging in carton box double wall K275, plastic free



Finishing

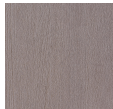


Finishing
Natural Teak

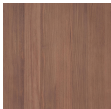
Teak Wood



Natural
Teak



Weathered
Teak

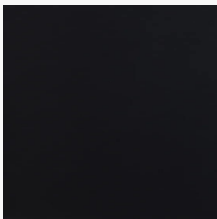


Protected
Teak



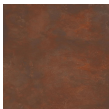
Black Teak

Top Surface

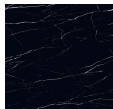


Top Surface
Nebula Nero Matte

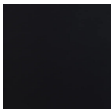
Porcelanic Surface



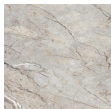
Bronzo
Bruno
Matte



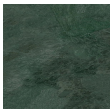
Marquina
Nero Matte



Nebula
Nero Matte



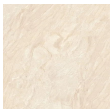
Salika
Grigio
Matte



Hutan
Ubud
Matte



Statuario
Altissimo



Daino
Royale
Matte

Raincover



Raincover
With Raincover



OTAEQU14



With
Raincover



Without
Raincover

