

Round Dining Table Teak D150

OTAZEN

OTAJAS08AT

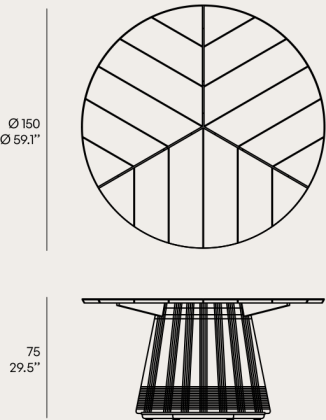
JASMINE COLLECTION by Pensi Studio

Jasmine brings a poetic rhythm to every space. Each curve, texture, and proportion is a dialogue between emotion and function, shaping unique islands of comfort that redefine the experience of relaxation. Blending abstract elegance with a strong sense of realism, Jasmine captures the essence of timeless design. Designed to be experienced from every angle, this collection offers a 360-degree approach, allowing for flexible configurations to suit any need. Every Jasmine arrangement tells a story—one of ease, elegance, and connection.



Remarks

- Table top in Solid teak wood FSC 100%
- Structure in Solid teak wood FSC100% and Aluminium Powdercoated
- Rope in Polypropylene UV protected
- Fittings in Stainless steel
- Glides in PA rubber
- Packaging in Carton box double wall K275, plastic free



Round Dining Table Teak D150

OTAZEN

OTAJAS08AT

Teak Wood



Teak Wood

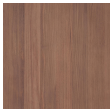
Natural Teak



Natural
Teak



Weathered
Teak

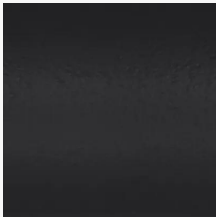


Protected
Teak



Black Teak

Aluminium Frame



Aluminium Frame

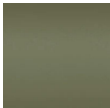
Grey Sand Texture



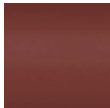
Beige
Junction



Grey Sand
Texture



Calpulative
Olive



Red Sand
Texture

Rope Ø3.5



Rope Ø3.5

Alma Round Rope R38 Beige



Alma
Round
Rope R13



Alma
Round
Rope R01



Alma
Round
Rope R38



Alma
Round
Rope R52



Alma
Round
Rope R56



Round Dining Table Teak D150

OTAJAS08AT

OTAJAS08AT

- Dark Grey
- Black
- Beige
- Red
- Green

Raincover



Raincover

With Raincover



With
Raincover



Without
Raincover

