

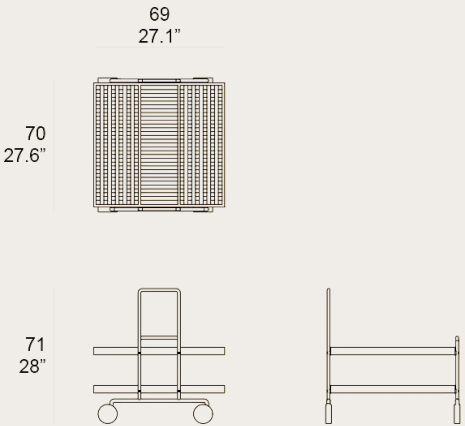
EQUADOR COLLECTION  
by Pensi Studio

With wood, stone, and fabric as its core elements, the Equador Collection plays with light and shadow, revealing beauty through contrast. Its structured lines allow light to flow gracefully, creating an ambiance that is both soft and captivating. Designed to provide comfort and a momentary escape from the hustle of daily life, this collection creates a serene space to unwind. Each piece is crafted from Otazen’s signature teak, ensuring not only durability but also a deep connection with nature.



Remarks

- Base in solid teak wood FSC 100%
- Fittings in stainless steel 304
- Glides in PA rubber
- Dining tables include adjusters
- Packaging in carton box double wall K275, plastic free



Finishing

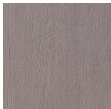


**Finishing**  
Natural Teak

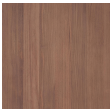
Teak Wood



Natural  
Teak



Weathered  
Teak

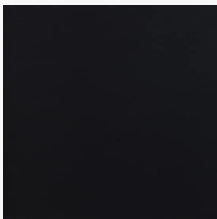


Protected  
Teak



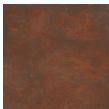
Black Teak

Top Surface



**Top Surface**  
Nebula Nero Matte

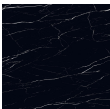
Porcelanic Surface



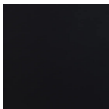
Bronzo  
Bruno  
Matte



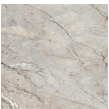
Ceppo  
Grigio  
Matte



Marquina  
Nero Matte



Nebula  
Nero Matte



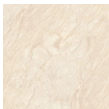
Salika  
Grigio  
Matte



Hutan  
Ubud  
Matte



Statuario  
Altissimo



Daino  
Royale  
Matte

Rain Cover



**Rain Cover**  
With Rain Cover



OTAEQU18



With Rain  
Cover



Without  
Rain  
Cover

