

# Square High Table 80

OTASTR16A OTazen

## Remarks

- Table top Solid teak wood FSC 100% and porcelanic surface
- Streching Stainless steel powder coated
- Base Solid teak wood FSC 100%
- Fittings Stainless steel 304
- Glides PA rubber
- Dining tables Include adjusters
- Packaging Carton box double wall K275, plastic free



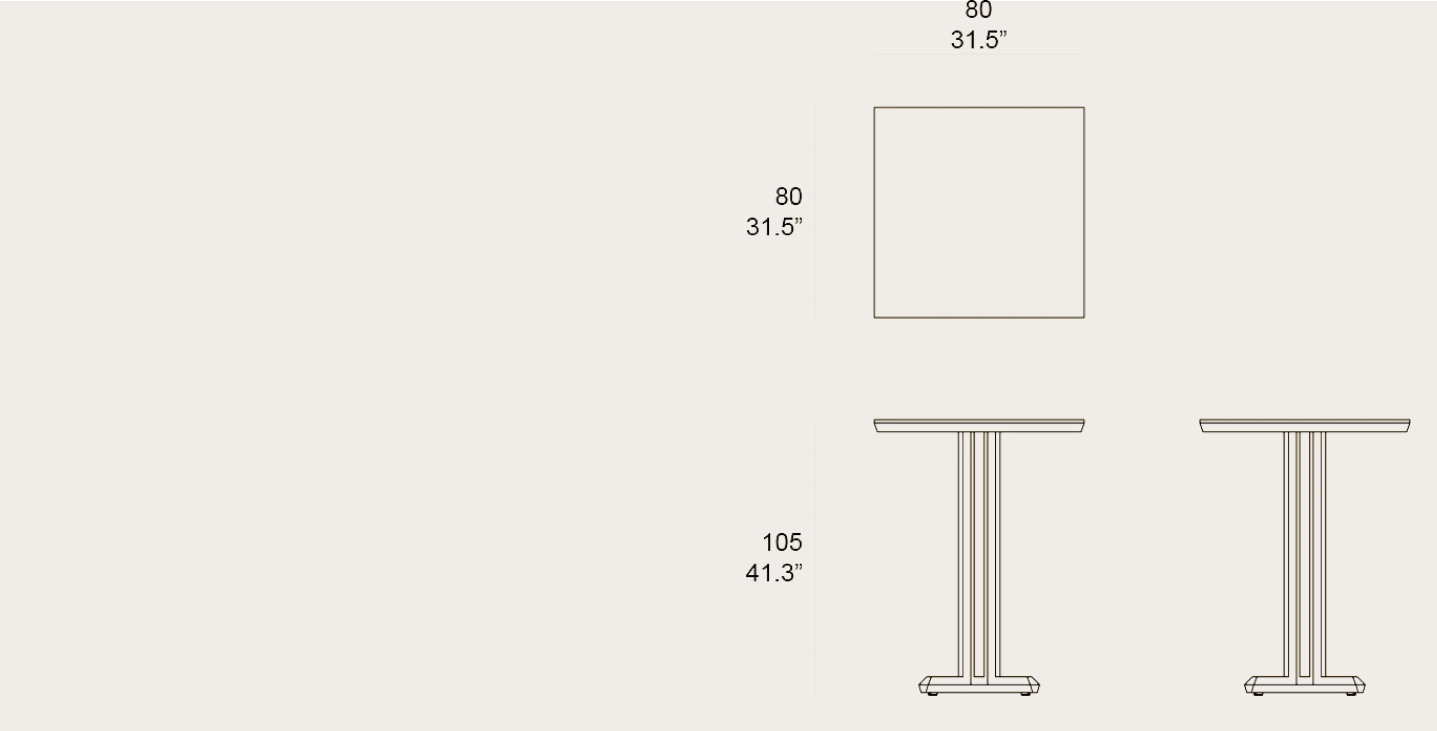
## Stripe Collection by Lagranja Design

The defining feature of the Stripe Collection lies in its distinctive lines, creating a dynamic and refined aesthetic. Its signature weaving is not just a decorative element but an integral part of the structure, providing both strength and flexibility. A modern touch that remains true to its natural and organic essence. Beyond its striking appearance, Stripe is designed for durability and functionality. Crafted from weather-resistant teak, it withstands various outdoor conditions without compromising comfort.



# Square High Table 80

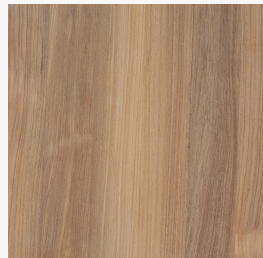
OTASTR16A<sup>OTazen</sup>



# Square High Table 80

OTASTR16A<sup>OTazen</sup>

## Finishing



Default configuration: Natural Teak

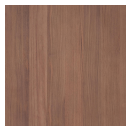
## Teak Wood



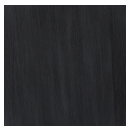
Natural  
Teak



Weathered  
Teak

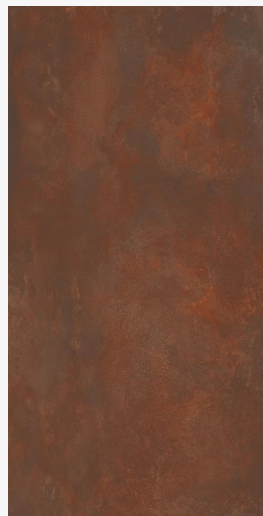


Protected  
Teak



Black Teak

## Top Surface



Default configuration: Bronzo Bruno Matte

## Porcelanic Surface



# Square High Table 80

OTASTR16A

OTazen



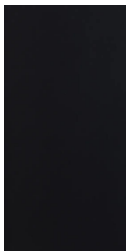
Bronzo  
Bruno Matte



Ceppo  
Grigio Matte



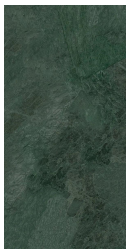
Marquina  
Nero Matte



Nebula Nero  
Matte



Salika Grigio  
Matte



Hutan Ubud  
Matte



Statuario  
Altissimo



Daino  
Royale  
Matte

## Teak Wood



Natural  
Teak



Weathered  
Teak



Protected  
Teak



Black Teak

